

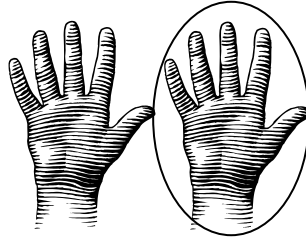
Yankadi Accompaniment



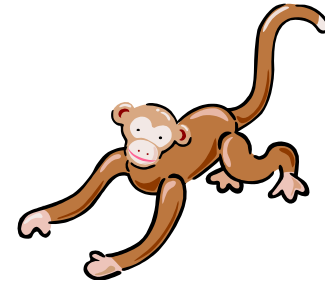
Dog



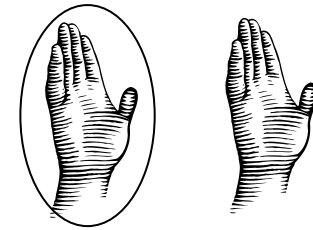
Chee-tah



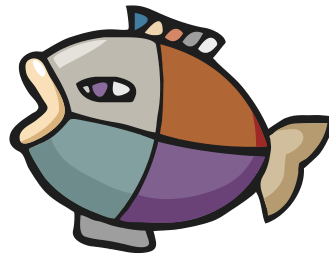
Dog



mon-Key



Dog



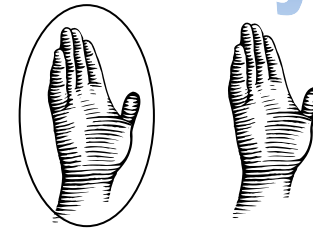
Fish



Dog



mon-Key



Explanation



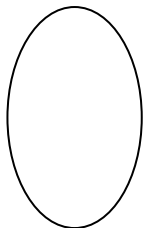
Our deepest note: the “Bass” played in the centre of the drum



The middle note: “Tone” played on the edge of the drum



The highest pitched note: “Slap” played on the edge of the drum



A note with a circle signifies to use the weak hand. This is the hand we don't write with