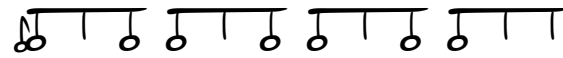


Kadan

Signal

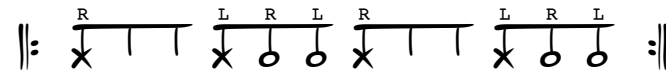


Djembe 1



“Cheese on toast”

Djembe 2



“Fish, Elephant”

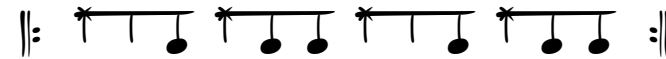
Dununba



Sangban



Kenkeni (Adv)



Key

Djembe

● Bass

○ Tone

✕ Slap

_R

Right Hand (Reverse if left is your strong hand)

_L

Left Hand (Reverse if left is your strong hand)

Duns

× Bell

✕ Push note

● Open note

— Dun enters here