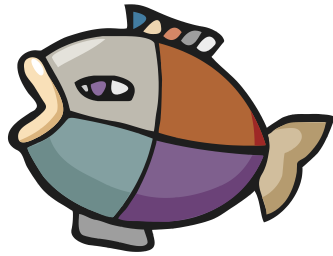
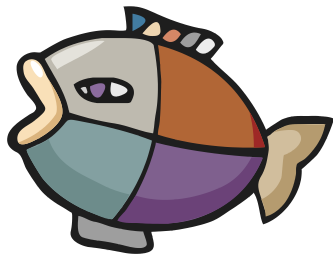


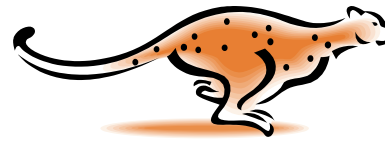
# Accompaniment Populaire 1



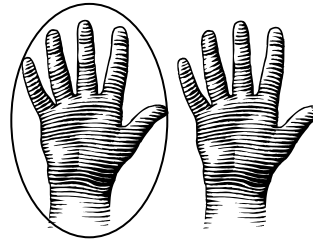
**Fish**



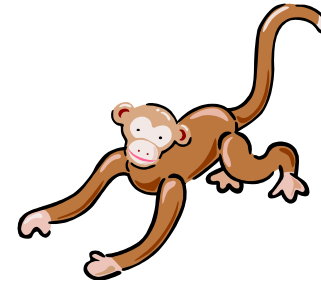
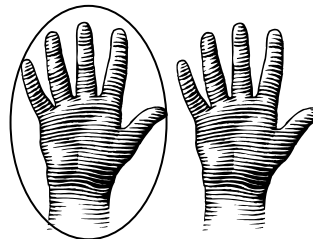
**Fish**



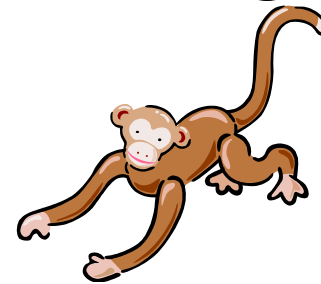
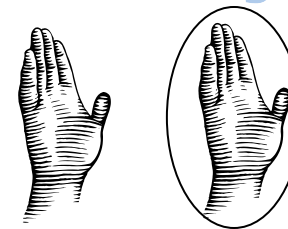
**Chee-Tah**



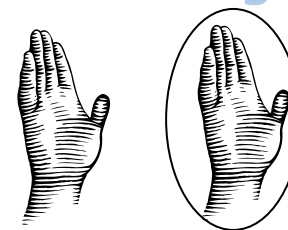
**Chee-Tah**



**Mon-key**



**Mon-key**



# Explanation



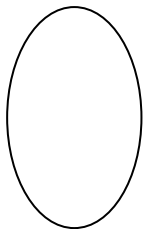
= Bass on the strong hand  
(In the middle of the drum)



= Tone on the strong hand  
(On the edge of the drum)



= Slap on the strong hand  
(On the edge of the drum)



= Circled notes signify the weak hand