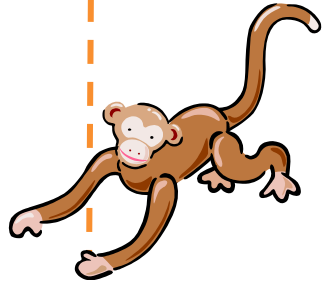
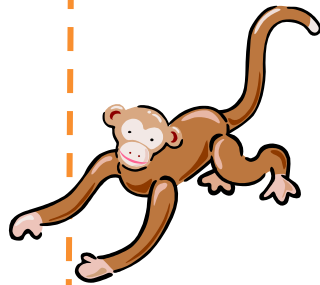


1



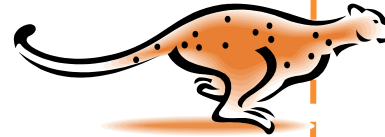
Mon — key



Mon — key



2



chee -Tah

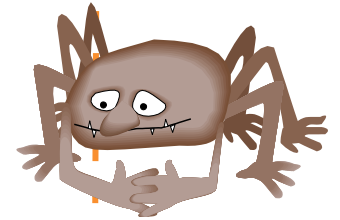


the Chee —



3

4



Spi-der



Tah



# Explanation



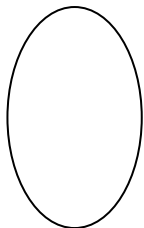
Our deepest note: the “Bass” played in the centre of the drum



The middle note: “Tone” played on the edge of the drum



The highest pitched note: “Slap” played on the edge of the drum



A note with a circle signifies to use the weak hand. This is the hand we don't write with